

*Caring  Comfort  
and Savvy wigs*



# LACE WIG

Washing  
& Care  
Guide

# TABLE OF CONTENTS



**01**  
How To

**02**  
Washing

**03**  
Drying

**04**  
Resetting

**05**  
Proper Hair Care

# HOW TO PUT ON YOUR WIG

## 01.

Hold your wig upside down, using two hands, with the nape facing up.

### Pro Tip:

*When applying your wig, do not put your fingers under the lace, if stray hairs are caught, remove wig and try again. Never pull the wig using the lace.*



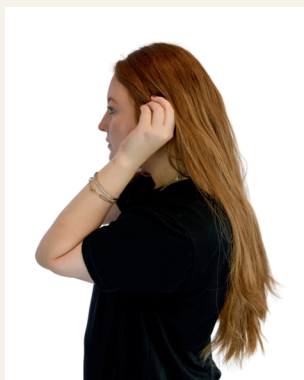
## 02.

Place your head into the wig, with it's hairline lower down on your forehead. Pull the nape of the wig down to your own nape and (if applicable) tuck any bio hair into the cap.

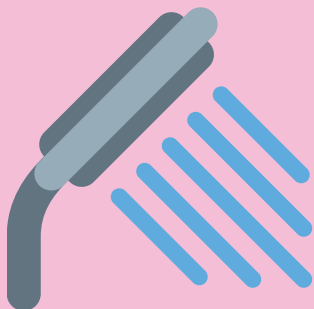


## 03.

Once it's secure, flip your head up and use the ear tabs (thicker sides of the wig) to pull the wig back to match your hairline. Ensure ear tabs are evenly placed on your head.



# WASHING YOUR LACE WIG



Real Hair Wigs should only be washed about once every 6-8 weeks (or longer) and **ONLY** by hand with a gentle shampoo in cool to luke warm water, thoroughly rinsed and then air-dried with **NO HEAT**. Do not place your wig directly under a high pressure faucet.

## **Human hair is natrually strong.**

However, hot water or hot tools can damage the lace top or loosen the knots that attach the hair to the wig. When washing, be gentle and avoid pulling and stretching the lace.

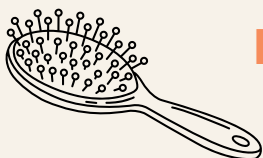
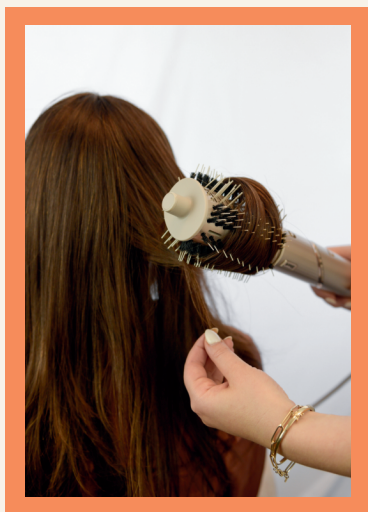
## **Washing & Conditioning**

- Thoroughly comb through wig in a downwards motion, starting at the bottom, working upward.
- Use cool to luke warm water in a sink or basin.
- Apply a high quality mild shampoo to the wet hair. Tap the shampoo into the top of the wig. Do **NOT** rub the scalp. Lather the soap in a downwards direction through the rest of the hair.
- Apply some of the soapy water to the inside of the cap and massage gently.
- Rinse again with cool to luke warm water from the top down and from the inside of the cap to remove excess shampoo. Protect the scalp with your hand from high pressured water.
- Next, apply a small drop of conditioner to the damp hair. Avoid the scalp area as the conditioner can loosen the knots. Repeat rising step (noted above).
- Gently wring our excess water at the ends, place hair in a towel for up to 30 minutes, then place on a wig head to finish drying.



## DRYING YOUR LACE WIG

- Gently blot the hair with a towel.
- Allow the wig to air dry naturally.  
*(Do **not** dry your wig with a blow dryer, It can dry out and damage the hair and lace top.)*
- To restyle your **dry** real hair wig, you may use a blow dryer, curling iron or flat iron on low heat settings. Only or use electric rollers on a medium setting.

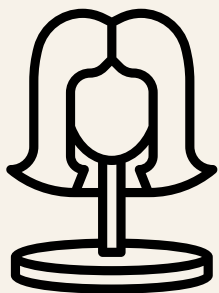


## PREVENT YOUR WIG FROM TANGLING



The best way to prevent tangles is to brush the wig every day and use a small drop of *Biosilk* (or similar product) every time it is done. This is really important to keep the wig healthy (to prevent dry hair and tangling) since it doesn't receive natural oils from the head.

Occasionally, wigs may tangle or knot up at the nape (back of the neck) because that area rubs the back and shoulders. The thinner the hair, the more likelihood there is that it will clump – this is totally normal.



# RESETTING YOUR LACE WIG

## PRO TIP:

We recommend resetting your lace wig every 2-3 weeks after daily wear, to help tighten the lace so it will not start to lift against the skin.

### RIBBON

01.

Place a wide, wet ribbon along the hairline of the wig. The ribbon should be placed half on the wig and half on the wig head.

### T-PIN

02.

Place a T-pin into the ribbon so that the hole is not made in the lace. The T pin should be placed half on the ribbon, half on the wig head.

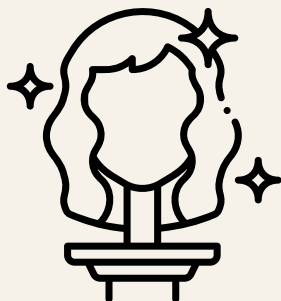
### DRY

03.

Let the ribbon dry overnight. Now prep and style and your wig is ready to wear!



# PROPER HAIR CARE



We want to ensure you get the best use out of your investment.

*Take care of your hair.*

Lace wigs are very delicate. Handle with care so not to rip the lace or to push the hair inside the cap. The lace should not be run directly under water or touched with any heating tools.

Never use the lace to pull or move your wig - only the thicker cap material and ear tabs. Do not stick your fingers under the lace when the wig is on your head.

Your lace may need to be trimmed eventually as it starts to fray or hair might need to be added to the hairline.

# TIPS & ADVICE

## CARING FOR YOUR WIG

### Use your (wig) head

Keep your wig on a wig head when it is not on your head. Wigs are made from fabric and can be creased when folded flat for too long.

You can use T-Pins placed ONLY at the ear tabs for more security or when styling on a wig head.

## MAKEUP USE ON YOUR WIG

### Conceal that lace

To create a more natural look apply a powder concealer in a light color using an angled brush along the part from the top of the wig. Stop just before the edge of the hairline. Try placing a small amount of concealer on the lace to conceal the connection (or knots) between the wig and skin. Reapply as necessary.

Do not allow powder concealer or daily makeup wear to build up on lace. Using a makeup wipe gently rub with your pointer finger along the inside of the lace to remove any makeup build up.

## STYLING YOUR WIG

### It's all about the look

If your wig is curly, we recommend lightly spraying your wig with water after each wear to help form your curls.

To create a more natural look, we recommend tousling the hairs at the hairline of your wig. These are called baby hairs and can be pulled forward to create a more seamless hairline.

If you will be placing your wig into a pony- we recommend lightly teasing out some hair by the ear tabs and nape of the neck.

Take care to carefully comb the hair in the front of the lace using a fine tooth comb- ensuring that all the hair is in the right direction and not under the cap.



# Savvy Wigs Warranty

Savvy Wigs does warranty all Savvy Custom and stock wigs for manufacturer defects for the first 6 months. (Any problem should become apparent within 6 months.) The warranty applies ONLY in the case of an obvious manufacturer's defect, such as excessive shedding, etc. The warranty does not cover damage caused by misuse of customers or hairdressers. Examples of misuse would be wigs that have been bleached or poorly cut. Determination of eligibility for the warranty is solely at Savvy's discretion.

Please Note: Although Savvy Custom Wigs are made to your specifications they do not come ready-to-wear. Even Pre-Styled wigs may require cutting and styling to suit your features and tastes.

## Important Notices

Cutting or coloring a wig should only be done by a professional experienced working with wigs.

Any wig that has been cut, colored or altered in any way may not be returned. The Savvy Wigs 6-Month Warranty only covers manufacturers defects.

## TWIN CITIES SHOWROOM:

**By appointment only - Call (651) 690-4100**

2844 Monterey Ave,  
St. Louis Park, MN 5546 USA

Tel: 651-690-4100 | Fax: 651-344-4330

[www.CaringAndComfort.com](http://www.CaringAndComfort.com)  
[Support@caringandcomfort.com](mailto:Support@caringandcomfort.com)  
[@caringandcomfort](mailto:@caringandcomfort)