

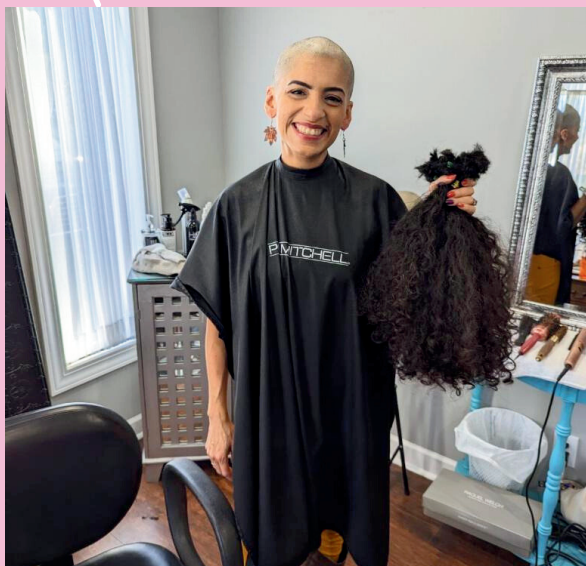
*Caring  Comfort
and Savvy wigs*



SKIN TOP WIG

Washing
& Care
Guide

TABLE OF CONTENTS



01

How To

02

Washing

03

Drying

04

Proper Hair Care

HOW TO PUT ON YOUR WIG

01.

Hold your wig upside down, using two hands, with the nape facing up.

Pro Tip:

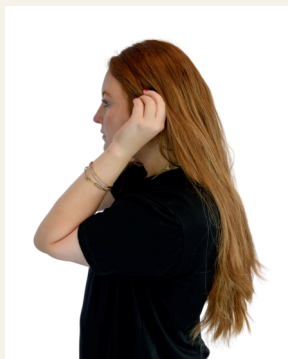
When applying your wig, do not put your fingers under the lace, if stray hairs are caught, remove wig and try again. Never pull the wig using the lace.

02.

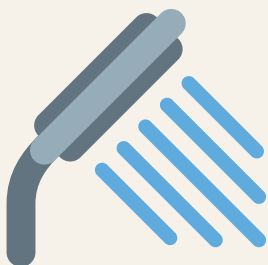
Place your head into the wig, with it's hairline lower down on your forehead. Pull the nape of the wig down to your own nape and (if applicable) tuck any bio hair into the cap.

03.

Once it's secure, flip your head up and use the ear tabs (thicker sides of the wig) to pull the wig back to match your hairline. Ensure ear tabs are evenly placed on your head.



WASHING YOUR NATURAL HAIR WIG



Real Hair Wigs should only be washed about once every 30 wears and **ONLY** by hand with a gentle shampoo in luke warm water, thoroughly rinsed and then air-dried with **NO HEAT**.

Human hair is natrually strong.

However, hot water or hot tools can damage the skin top or loosen the knots that attach the hair to the wig. When washing, be gentle and avoid pulling and stretching the lace.

Washing & Conditioning

- Thoroughly comb through wig in a downwards motion, starting at the bottom, working upward.
- Use cool to luke warm water in a sink or basin.
- Apply a high quality mild shampoo to the wet hair. Tap the shampoo into the top of the wig. Do **NOT** rub the scalp. Lather the soap in a downwards direction through the rest of the hair.
- Apply some of the soapy water to the inside of the cap and massage gently.
- Rinse again with cool to luke warm water from the top down and from the inside of the cap to remove excess shampoo. Protect the scalp with your hand from high pressured water.
- Next, apply a small drop of conditioner to the damp hair. Avoid the scalp area as the conditioner can loosen the knots. Repeat rising step (noted above).
- Gently wring our excess water at the ends, place hair in a towel for up to 30 minutes, then place on a wig head to finish drying.



Brush



Wet



Lather



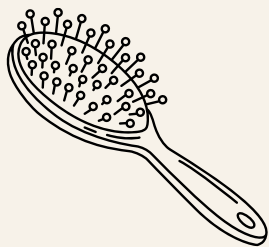
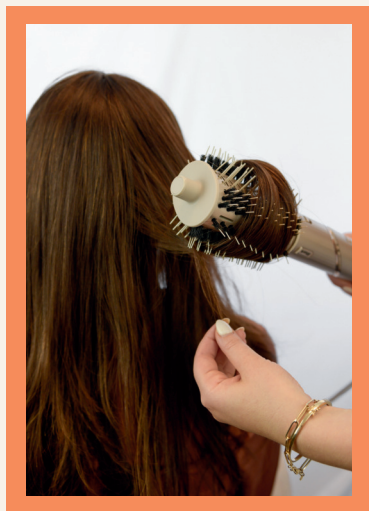
Rinse



Wring

DRYING YOUR REAL HAIR WIG

- Gently blot hair with a towel.
- Allow the wig to air dry naturally.
(Do **not** dry your wig with a blow dryer.
It can dry out and damage the hair and skin top.)
- To style your **dry** natural hair wig, you may use a blow dryer, curling iron or flat iron on low heat settings only or use electric rollers on a medium setting.



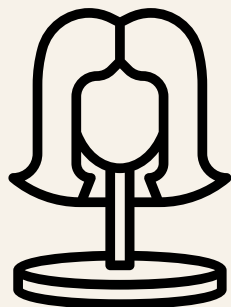
PREVENT YOUR WIG FROM TANGLING



The best way to prevent tangles is to brush the wig every day and use a small drop of *Biosilk* (or similar product) bi-weekly. This is really important to keep the wig healthy (to prevent dry hair and tangling) since it doesn't receive natural oils from the head.

Occasionally, wigs may tangle at the nape (back of the neck) because that area rubs the back and shoulders. During the dry winter months you may find it will tangle more often – this is normal.

PROPER HAIR CARE



Changing the position of your part:

Spray the part thoroughly with cool to luke warm water, then comb and part the wet hair to your desired style. Use a blow dryer on low to medium heat to set the part.



Do not leave the blow dryer in one spot, use a continuous downward motion on the hair.

Savvy Wigs Warranty

Savvy Wigs does warranty all Savvy Custom and stock wigs for manufacturer defects for the first 6 months. (Any problem should become apparent within 6 months.) The warranty applies ONLY in the case of an obvious manufacturer's defect, such as excessive shedding, etc. The warranty does not cover damage caused by misuse of customers or hairdressers. Examples of misuse would be wigs that have been bleached or poorly cut. Determination of eligibility for the warranty is solely at Savvy's discretion.

Please Note: Although Savvy Custom Wigs are made to your specifications they do not come ready-to-wear. Even Pre-Styled wigs may require cutting and styling to suit your features and tastes.

Important Notices

Cutting or coloring a wig should only be done by a professional experienced working with wigs.

Any wig that has been cut, colored or altered in any way may not be returned. The Savvy Wigs 6-Month Warranty only covers manufacturers defects.

TWIN CITIES SHOWROOM:

By appointment only - Call (651) 690-4100

2844 Monterey Ave,
St. Louis Park, MN 5546 USA

www.CaringAndComfort.com
Support@caringandcomfort.com
[@caringandcomfort](https://www.instagram.com/caringandcomfort)

Tel: 651-690-4100 | Fax: 651-344-4330